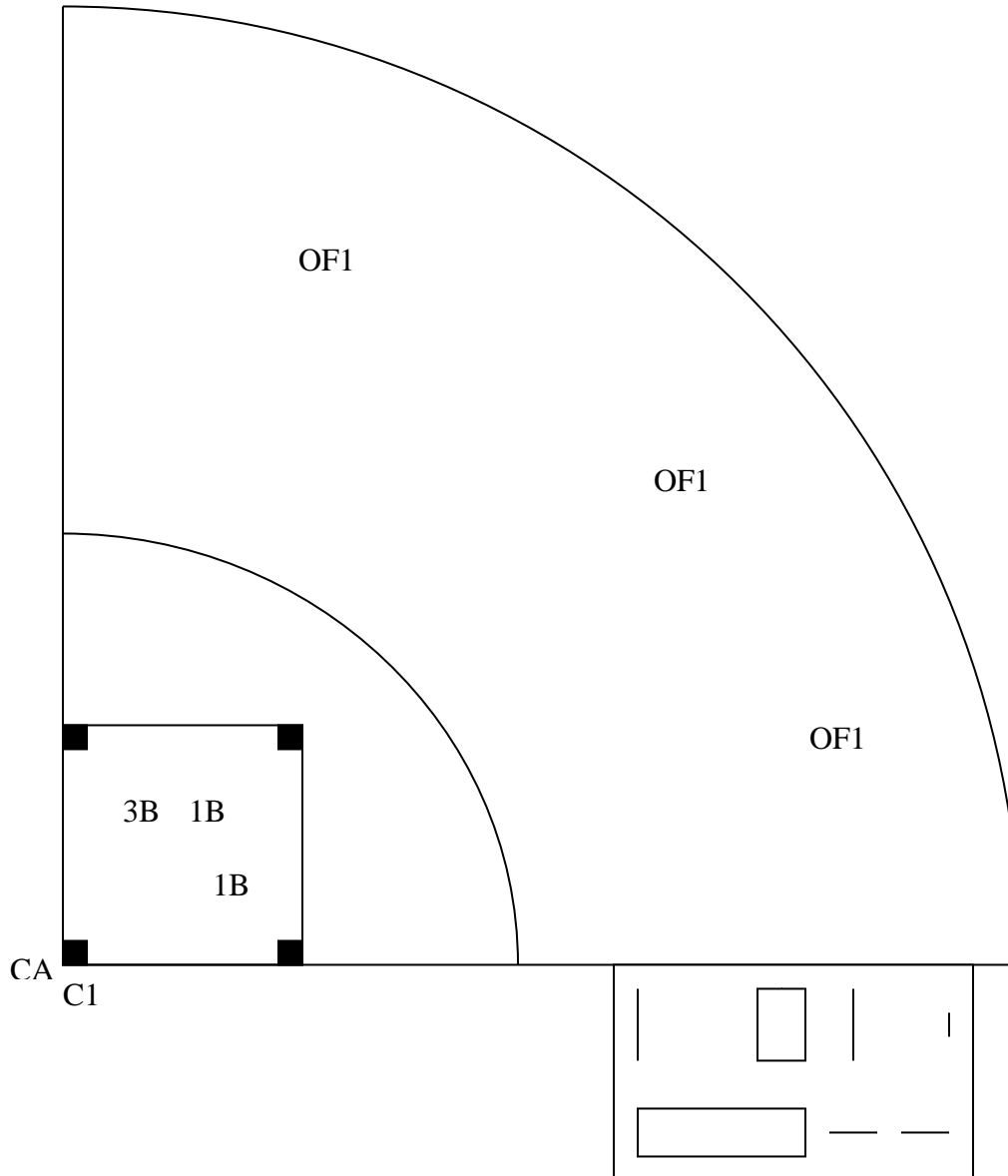


OH-MAN! OUTFIELD DRILL



POSITIONS

- C1:** Begins drill by hitting a routine FB to the first OF then proceeds by hitting balls progressively shorter after each throw by the same OF until he has made it all the way to the catcher
- OF1-?** OF1 starts in normal position. C1 will begin by hitting a routine FB to the OF who will work behind the ball and make a throw through the cutoff man to CA. Immediately after he makes the throw, C1 will hit another ball slightly shorter to OF1 who will again field and throw through the cut man. The drill continues until OF1 has made it all the way into the IF. If OF1 makes an error or bad throw, he must start over.
- 1B/3B:** Lines up between the OF and CA in cutoff position, working to either cut errant throws or decoy on good throws.
- CA:** Works on receiving throws and making tags at the plate.
- * Ideally each OF's makes 4-6 good throws.
- ** Could also line drill up for throws at 2nd or 3rd